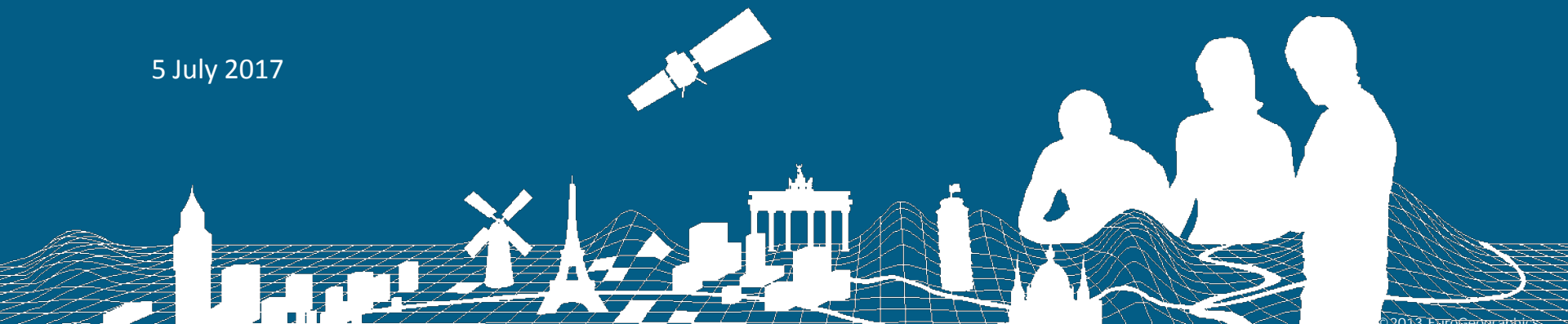


# Brokering a future for National Mapping

Ingrid Vanden Berghe  
President  
EuroGeographics

Cambridge Conference

5 July 2017



# EUROGEOGRAPHICS

 **63 members**  
 **46 countries**  
 from the whole of geographical Europe

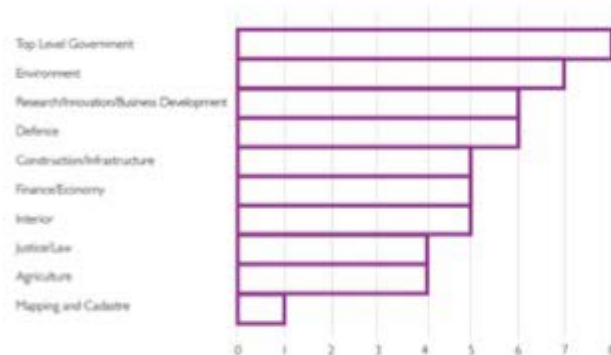
Members invest over  
**€1.5B**   
 each year in the development  
 of geo-information

 Relied on by  
 European  
 Commission  
 Businesses  
 & Citizens

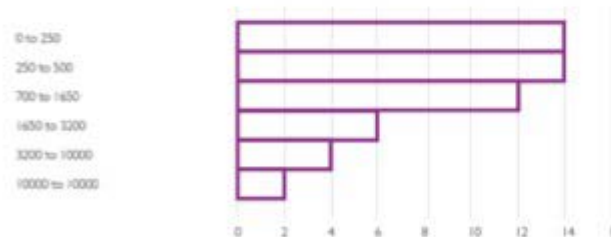
Share best practice through  
 expert  
 knowledge  
 exchange  
 networks

Over  
**66,000**  
  
 people are employed by  
 Eurogeographics members

Geospatial information provided by EuroGeographics' members contributes to a wide range of social, economic and environmental activities.



EuroGeographics represents a diverse number of organisations. The smallest employs just nine people whilst the largest has more than 10,000 staff.



# Digital economy



e-gov  
+ g-gov

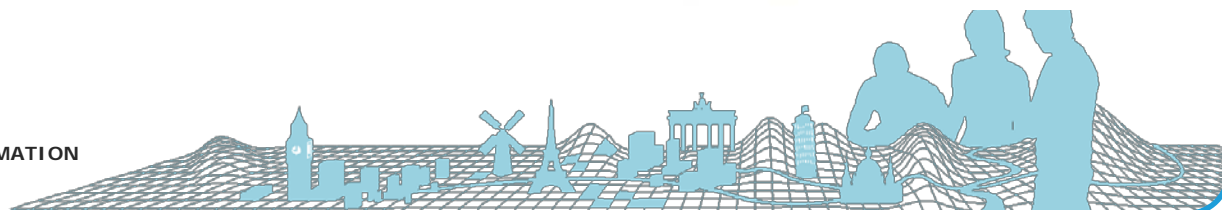
---

i-gov



# Official national sources of geodata

REMOTE SENSING  
LAND SERVICE TOPOGRAPHY SURVEYS  
INSTITUTE  
**AUTHORITATIVE GEODATA**  
LAND REGISTRY  
SURVEYING  
MAPPING COUNCIL  
COMMITTEE CARTOGRAPHIC  
**NATIONAL** SERVICE  
GEOGRAPHIC  
ADDRESS  
PROPERTY AGENCY  
CADASTRE  
REAL ESTATE  
AUTHORITY BOARD



# Drivers for national mapping & geospatial authorities



**Smart cities**



**Fulfil need for cross-border  
authoritative data**



**New methods of consumption**

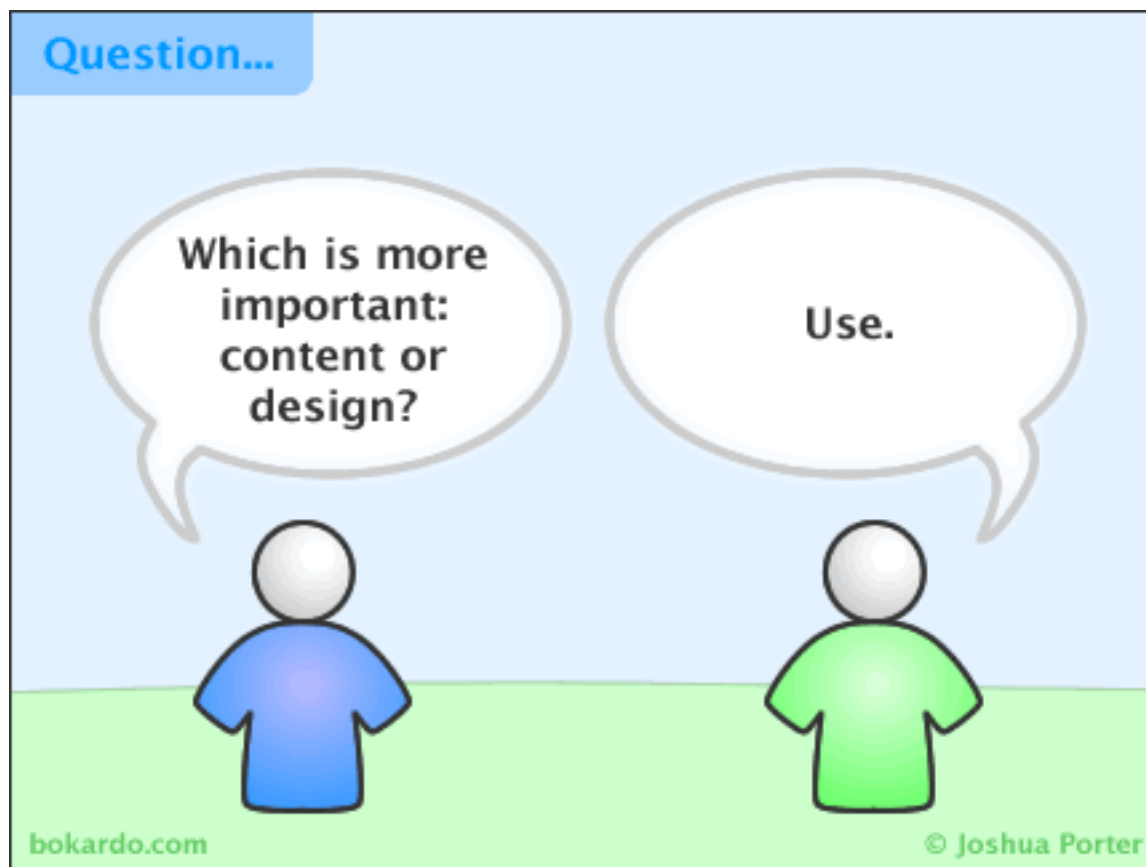


**Legal obligations**



**Global market**

# Meeting user expectations & fulfilling potential



# INSPIRE – opening the door to interoperable data



## To do list:

- Full harmonisation
- Support further implementation
- Use principals to benefit delivery of other policies
- Consistent interpretation & reporting



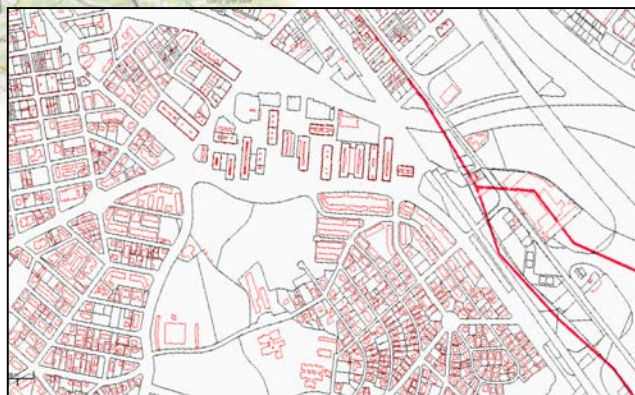
# A vision for future European Location Services

A blurred background image showing a person in a dark jacket looking through a large, silver telescope. The telescope is pointed upwards towards a clear blue sky. The person's face is partially visible in profile, looking through the eyepiece.

*To provide the single access point for international users of harmonised, pan-European, authoritative geospatial information and services.*

*For national mapping, cadastral and land registry authorities to be recognised in our International effort to contribute to the wider public good.*

# A gateway to data from official national sources



- ✓ Gives confidence that information is consistent and comparable regardless of its national source
- ✓ Enables data to be easily shared
- ✓ Provides information to define, implement and analyse policies

# Open ELS Project



Co-financed by the European Union  
Connecting Europe Facility

## Develop & implement Open European Location Services

- Develop Open Data services for the priority domain of geospatial information from European NMCA's
- Improve the quality, availability and interoperability of data from different, cross-border public authorities, facilitating access to and encouraging the uptake and use of data
- Strongly user oriented
- Involve SMEs through a programme of engagement to encourage the SME sector to take up Open Data services and develop innovative solutions for the market

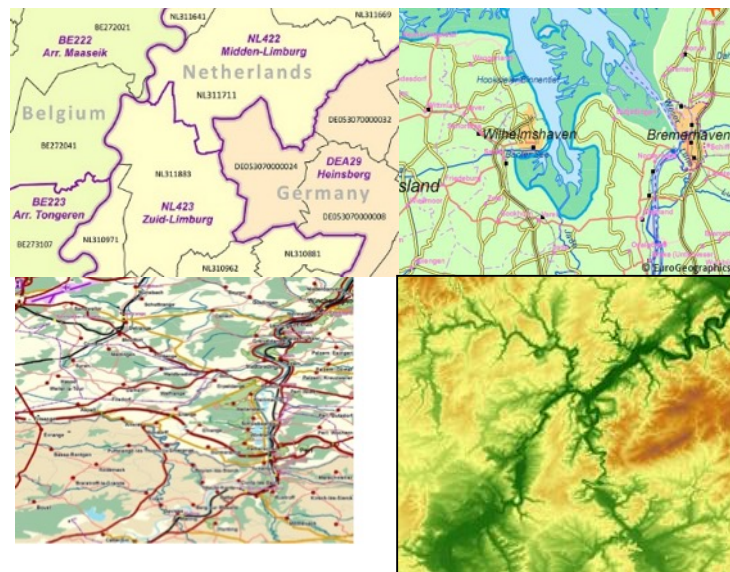


# Why EuroGeographics?

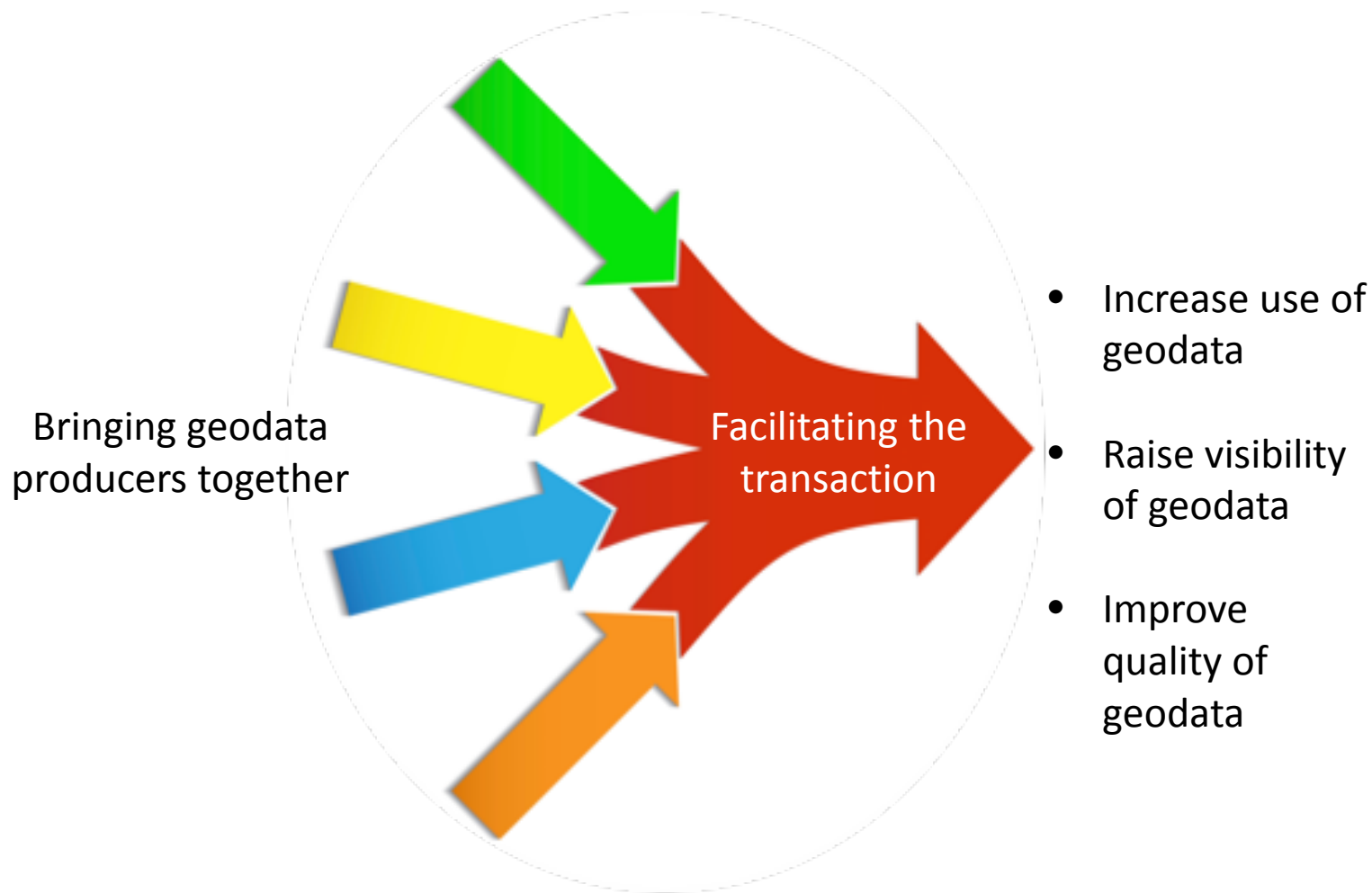


- Strong track record of working in partnership
- Respected authority
- Trusted source of data & information

- Expertise in delivering harmonised products
- Know the market
- Relationships with end users & external data providers



# Facilitating geodata services





# Data on demand





The best way to predict  
the future, is to *create* it.

“ ”

IPSOS OPEN THINKING EXCHANGE

**Thank you**

**ir Ingrid Vanden Berghe**

**administrateur-generaal NGI  
president EuroGeographics**

**[ivb@ngi.be](mailto:ivb@ngi.be)**

**[www.eurogeographics.org](http://www.eurogeographics.org)**

