



The Needs of First Responders – Enduring Principles and Challenges for the Future

Alan Mills

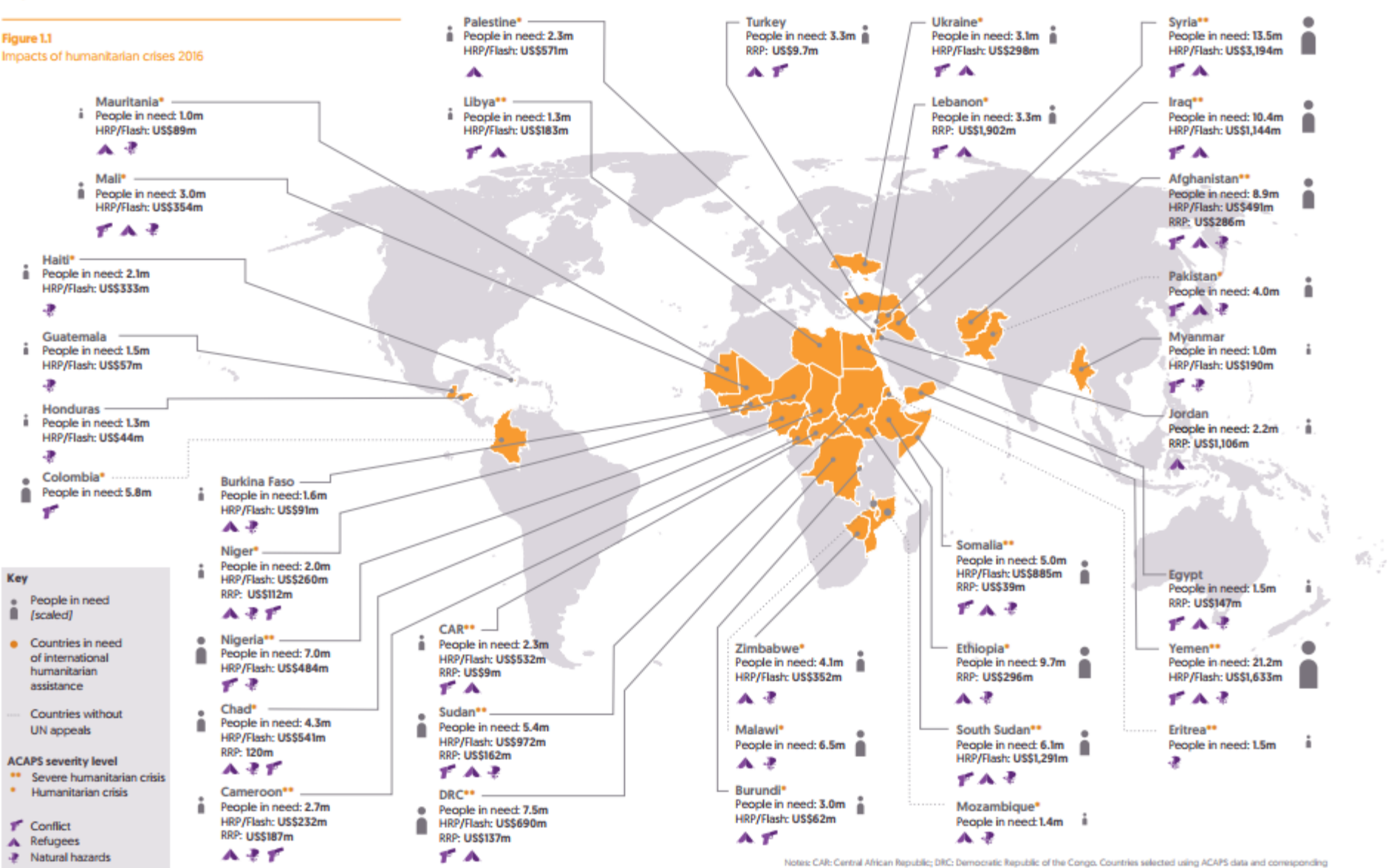
Preparedness Coordinator and Trustee

Cambridge Conference

Keble College

3 July 2017

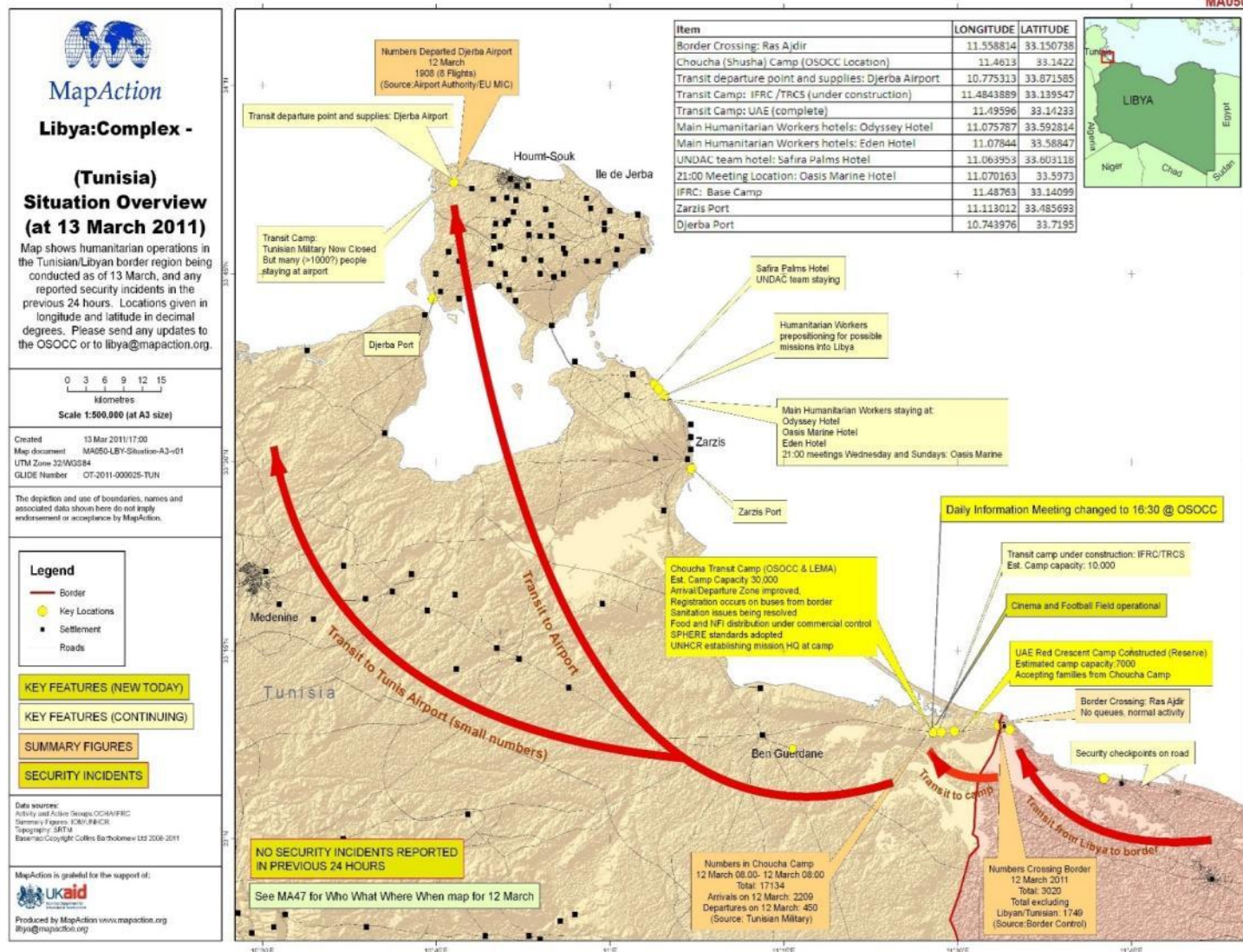
Figure 1.1
Impacts of humanitarian crises 2016

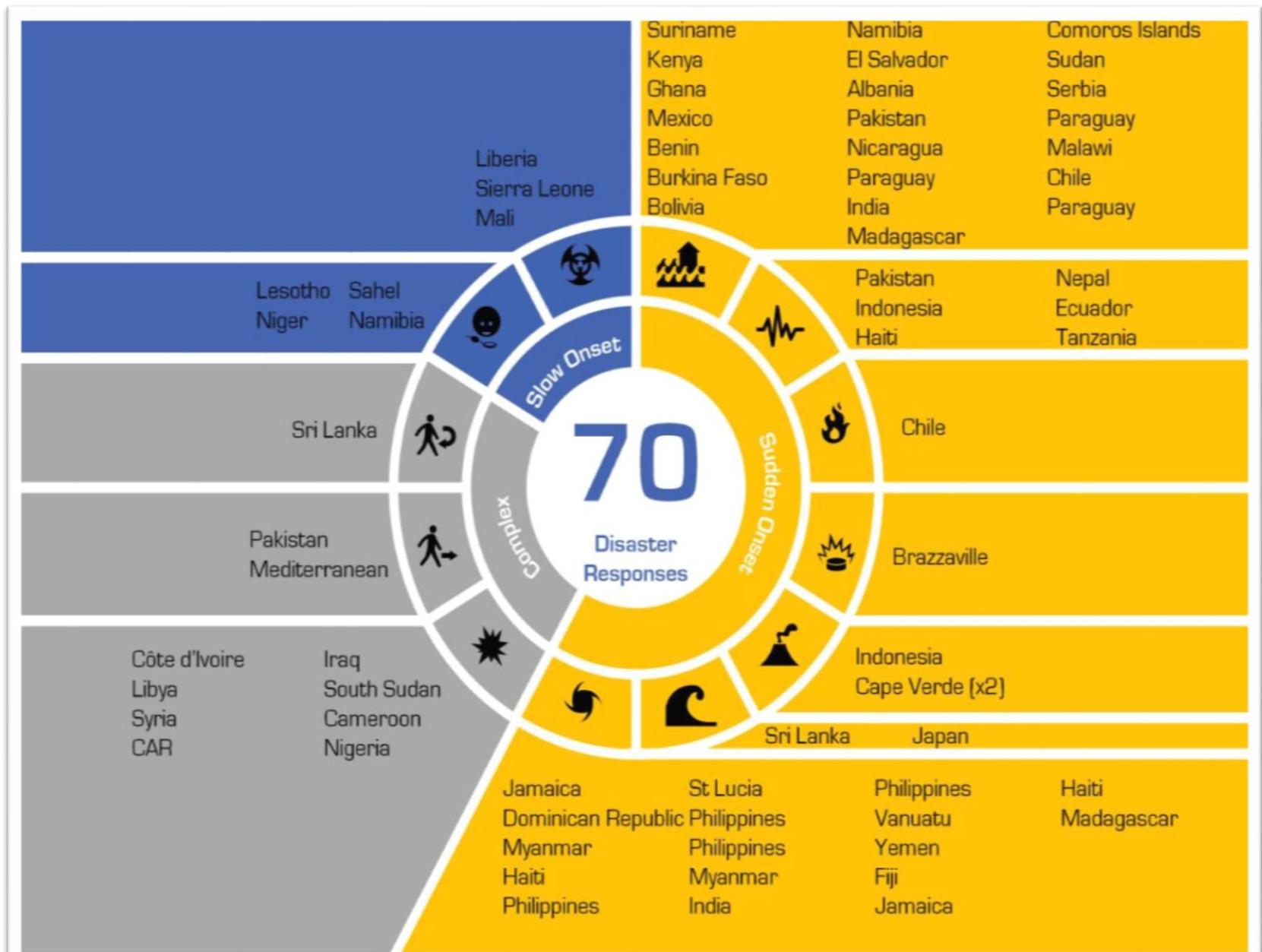


Source: Development Initiatives based on ACAPS, Food and Agriculture Organization, UN OCHA, UN High Commissioner for Refugees (UNHCR), UN Relief and Works Agency for Palestine Refugees in the Near East, Centre for Research on the Epidemiology of Disasters, and INFORM Index for Risk Management data.

Notes: CAR: Central African Republic; DRC: Democratic Republic of the Congo. Countries selected using ACAPS data and corresponding estimates of people in need. Other countries with UN appeal requirements in 2016 are also included, with their estimates of people in need. Countries with fewer than one million people in need are not shown. Country requirements under the Sahel appeal have been counted as humanitarian response plans, so are not included as regional appeal requirements. For Iraq, both Iraqi population in need in-country as identified by ACAPS and population in need from the Syria SRP document have been included. For further information on coding crisis types see Methodology and Definitions. Data is in current prices.

Why Maps? Shared situational awareness - COP





Basic Data Needs



Topographical/Cultural:

- roads
- buildings
- urban development
- railways
- airports
- placename gazetteer
- administrative boundaries
- rivers & lakes
- contours

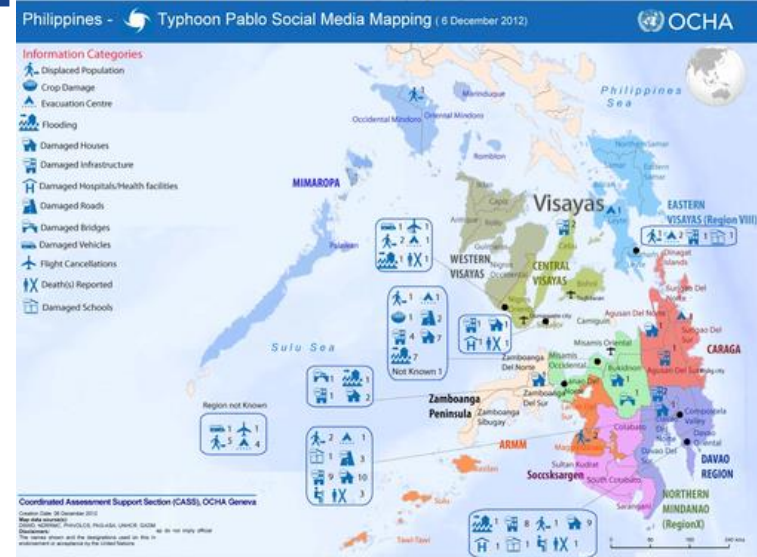
Critical Infrastructure:

- health facilities
- educational establishments
- police stations
- fuel stations
- ports
- airports
- ferry routes

Other baseline info:

- Underlying health indicators
- Disease incidence
- School enrolments
- Market locations
- Any preparedness data

The Changing Face of Humanitarian Response





We receive core funding grants from:



Department
for International
Development



Ministry of Foreign Affairs of the
Netherlands

We receive generous support from many companies including:

