

Building a national infrastructure for growth when choices are running out

- A national infrastructure assessment
- The challenges we face
- A long-term vision

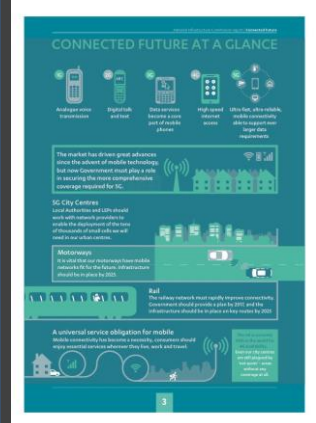


The NIC will provide an assessment of the UK's infrastructure needs every 5 years, looking 30 years ahead across the key sectors of economic infrastructure – energy, transport, water supply, waste, flood defences, digital and broadband.



CONNECTED FUTURE

NATIONAL
INFRASTRUCTURE
COMMISSION



NATIONAL INFRASTRUCTURE COMMISSION TECHNOLOGY STUDY CALL FOR EVIDENCE

NATIONAL
INFRASTRUCTURE
COMMISSION

February 2016

“...a study to identify which new technologies have the greatest potential for improving the productivity of our infrastructure, and what steps government should take to support the deployment of these technologies”



Phil Graham
Chief Executive
National Infrastructure Commission

www.nic.org.uk
[@mrphilgraham](https://twitter.com/mrphilgraham)
philip.graham@nic.gsi.gov.uk