

ORDNANCE SURVEY

FUNCTIONAL ORGANISATION CHART

As at 1st April 2023

The Executive Team



Stephen Lake
Chief Executive
Officer



Steve Showell
Chief Financial Officer &
Director, Corporate Services

Business Units



Nick Giles
MD
Consumer



Paul French
MD Commercial



John Kimmance
Director of National
Mapping Services (NMS)

Expert Functions



Richard Gifford
Chief Technology Officer



Hazel Hendley
Director, People &
Organisational Effectiveness



Leanne Upson
Director of Customer &
Marketing



David Henderson
Chief Geospatial
Officer



Jon O'Meara
Head of Legal &
Company Secretary

National Mapping Services



John Kimmance
Director of National Mapping Services (NMS)

Public Sector
Geospatial
Agreement
(PSGA)

Partner Channels

Client & Customer
Solutions

Production

NMS Futures
Strategy, Change
& Business
Operations

GeoPlace

Commercial



Paul French
MD Commercial

International

Propositions &
Markets

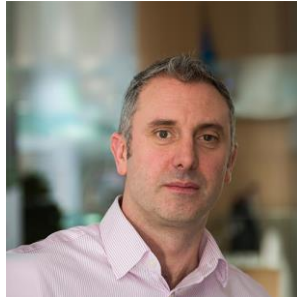
Strategy &
Performance

OS Connect

Consultancy
Services

Geovation

Consumer



Nick Giles
MD Consumer

Commercial

Operations

Partnerships

OS Maps

Corporate Services



Steve Showell
Chief Financial Officer & Director, Corporate Services

Finance

Risk & Assurance

Procurement

Programme
Delivery

Security

Chief Geospatial Office



David Henderson
Chief Geospatial Officer

Corporate Insight
& Geospatial
Strategy

External Affairs

Enterprise Design

Data Strategy

Data Science &
Management

Technology & Design



Cyber Information
& Security

Systems
Development

Technology
Architecture

Cloud Delivery

IT Services

Customer & Marketing



Leanne Upson
Director of Customer & Marketing

Marketing –
Consumer

Marketing –
Commercial

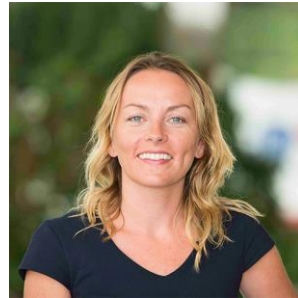
Marketing –
National Mapping
Services

Customer
Experience

Brand & Digital
Platforms

Newsroom &
Content

People & Organisational Effectiveness



Hazel Hendley
Director, People & Organisational
Effectiveness

Reward

Resourcing &
Talent

Business
Partnering

Organisation
Development

Learning &
Development

HR Service
Delivery

Facilities
Management
(including
Environment &
Sustainability)