



Ordnance Survey

OS OPENDATA SIMPLE GUIDE

Product: OS OPEN MAP – LOCAL



 search

OS OPENDATA SIMPLE GUIDE

Product: OS OPEN MAP – LOCAL

Introduction

About this guide

Using OS Open Map – Local

- 1 Downloading OS OpenData
- 2 Opening OS OpenData in QGIS
- 3 Styling Vector Data
- 4 Opening and saving maps in composer



 search

INTRODUCTION

ABOUT THIS GUIDE

This is a simple guide for those with no previous knowledge of geographic information systems (GIS). This guide will introduce users to downloading OS OpenData™, creating simple maps with Quantum GIS (QGIS), and exporting map images as a PDF or JPEG file.

The aim of this exercise is to produce a map of Southampton at a scale of 1:10 000.

OS Open Map – Local is updated quarterly and is appropriate for maps of scale 1:3 000-1:20 000.

OS Open Map delivers the highest level of detail at street-level out of the OpenData vector mapping products.

For more information on OS Open Map – Local go to:

www.os.uk/business-and-government/products/os-open-map-local.html

OS OPENDATA SIMPLE GUIDE

Product: OS OPEN MAP – LOCAL

Introduction

About this guide

Using OS Open Map – Local

1 Downloading OS OpenData

2 Opening OS OpenData in QGIS

3 Styling Vector Data

4 Opening and saving maps in composer

USING OS OPEN MAP – LOCAL

1 DOWNLOADING OS OPENDATA

- Firstly OS Open Map – Local needs to be downloaded from the OS site:
www.os.uk/opendatadownload/products.html
- Scroll to **OS Open Map – Local** and select grid reference square using the two letter reference list. Southampton lies in the **SU** grid reference square, so **SU** has been selected from the reference list.

OS Open Map - Local

Data type: Vector

Supply format:

Version: 03/2015

Selecting National Grid Reference squares

Using the map on the right, or a [full size version](#), identify which square(s) you want to download. Select or deselect squares by clicking on the map on the right.

To manually select or deselect multiple squares from the two letter reference list, press and hold the **CTRL** key (Windows) or the **Command** key (OS X) while selecting from the list.

National Grid Reference squares [5 Kb - 151 Mb] N/A ☒

			HP			SH
			HT HU			SJ
						SK
			HW HX HY HZ			SM
NA NB NC ND						SN
NF NG NH NJ NK						SO
NL NM NN NO						SP
NR NS NT NU						SR
			NW NX NY NZ OV			SS
						ST
			SD SE TA			SU
			SH SJ SK TP			SV
SM SN SO SP TL TM						SW
SR SS ST SU TO TR						SX
SV SW SX SY SZ TV						SY
						SZ



search

OS OPENDATA SIMPLE GUIDE

Product: OS OPEN MAP – LOCAL

Introduction

About this guide

Using OS Open Map – Local

1 Downloading OS OpenData

2 Opening OS OpenData in QGIS

3 Styling Vector Data

4 Opening and saving maps in composer

- Here is a larger image of the National Grid Reference squares:

				HP (N42)		
			HT (N31)	HU (N41)		
	HW (N10)	HX (N20)	HY (N30)	HZ (N40)		
NA (09)	NB (19)	NC (29)	ND (39)			
NF (08)	NG (18)	NH (28)	NJ (38)	NK (48)		
NL (07)	NM (17)	NN (27)	NO (37)			
	NR (16)	NS (26)	NT (36)	NU (46)		
	NW (15)	NX (25)	NY (35)	NZ (45)		
		SC (24)	SD (34)	SE (44)	TA (54)	
		SH (23)	SJ (33)	SK (43)	TF (53)	TG (63)
	SM (12)	SN (22)	SO (32)	SP (42)	TL (52)	TM (62)
	SR (11)	SS (21)	ST (31)	SU (41)	TQ (51)	TR (61)
SV (00)	SW (10)	SX (20)	SY (30)	SZ (40)	TV (50)	

- Tick the box for Download (as seen in download page image).
Scroll down to the bottom of the page and click **Next**.
- Fill in the details required and you will receive an email with a link to download the data as a .zip file.
Save the file to a designated folder. Once the download is complete extract the file.
Now you should have a data folder with the all the components as SHX, SHP, PRJ and DRB files.



search

OS OPENDATA SIMPLE GUIDE

Product: OS OPEN MAP – LOCAL

Introduction

About this guide

Using OS Open Map – Local

1 Downloading OS OpenData

2 Opening OS OpenData in QGIS

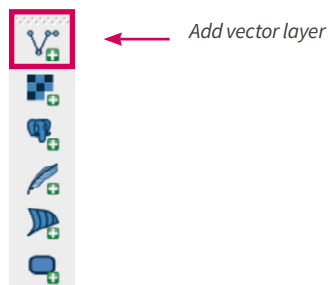
3 Styling Vector Data

4 Opening and saving maps in composer

2 OPENING OPENDATA IN QGIS

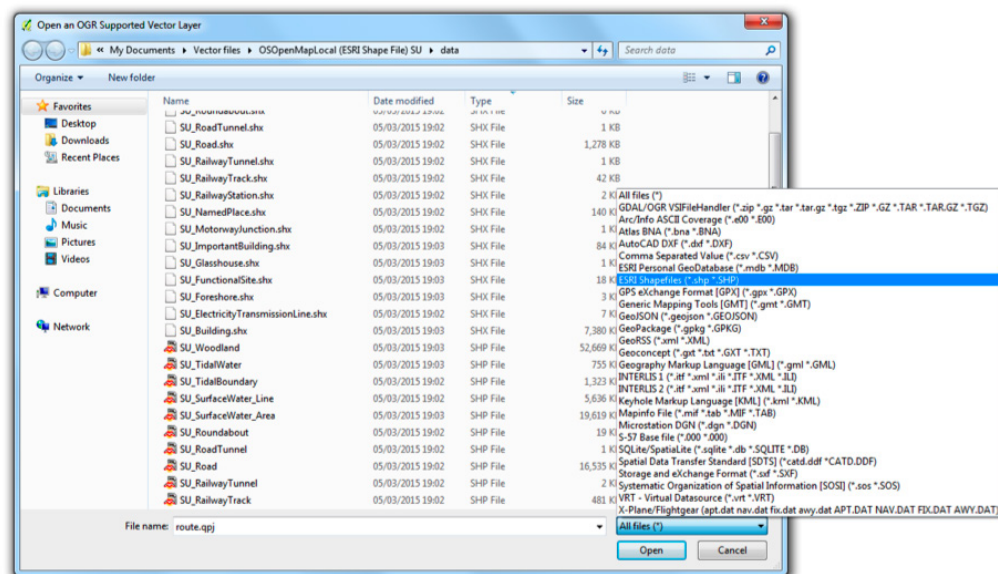
- Open QGIS from **Start > All Programs > QGIS Brighton > QGIS Desktop 2.6.1**

- To add the OS OpenMap select '**Add vector layer**' (see below).



- Click 'Browse' and navigate to the data folder **OSOpenMapLocal (ESRI Shape File)SU > data**.

- Click on the drop down menu next to '**File name**' and select **ESRI shapefiles (*.shp, *.SH)**



search

OS OPENDATA SIMPLE GUIDE

Product: OS OPEN MAP – LOCAL

Introduction

About this guide

Using OS Open Map – Local

1 Downloading OS OpenData

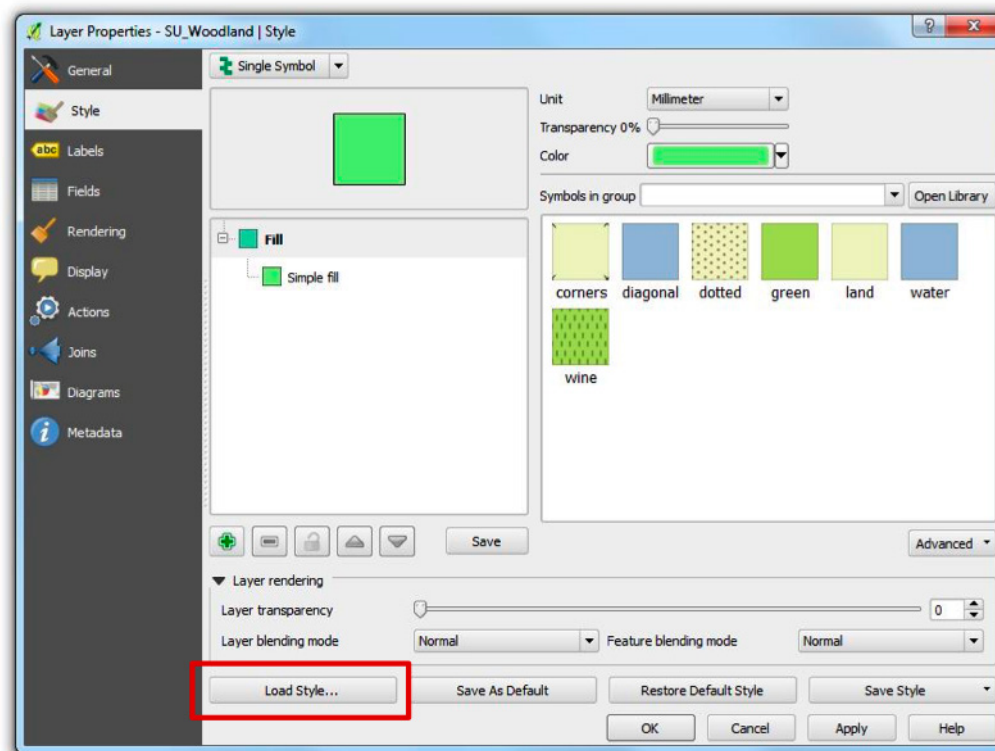
2 Opening OS OpenData in QGIS

3 Styling Vector Data

4 Opening and saving maps in composer

3 STYLING VECTOR DATA

- For each layer the colours have been assigned randomly. To make the map clear and understandable the QML files can be applied to each layer. To do this first right click on the **SU_Woodland** layer and select '**Properties**'.
- This will open a new window. Make sure the '**Style**' tab on the left is selected.



- Click '**Load Style**' and a new window will open to folders navigate to: **OSOpenMapLocal (ESRI Shape File) SU > resources > MapStyling > QGIS stylesheets (QML) > SHP > Full colour style**.



search

OS OPENDATA SIMPLE GUIDE

Product: OS OPEN MAP – LOCAL

Introduction

About this guide

Using OS Open Map – Local

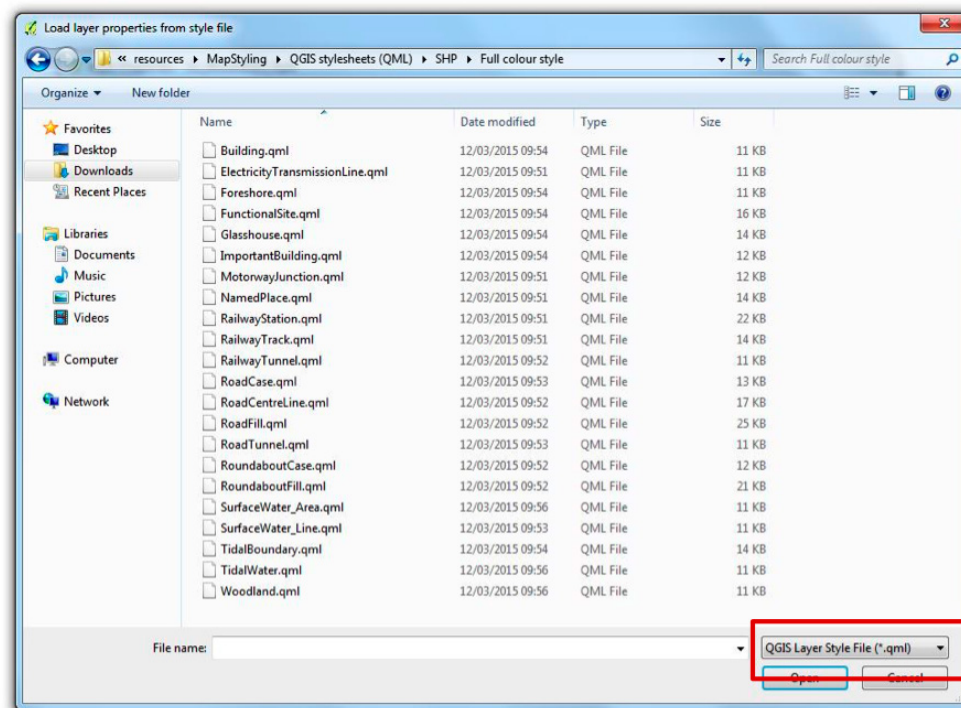
1 Downloading OS OpenData

2 Opening OS OpenData in QGIS

3 Styling Vector Data

4 Opening and saving maps in composer

- On drop down menu to the right of 'File name:' ensure that '**QGIS Layer Style File (*.qml)**' has been selected.



- Select **Woodland.qml** and click '**Open**' then on the Layer Properties window click '**OK**'.
- Repeat this process for each layer apart from **SU_Roundabout** and **SU_Road**, choosing their respective QML file for '**Load style**'.



search

OS OPENDATA SIMPLE GUIDE

Product: OS OPEN MAP – LOCAL

Introduction

About this guide

Using OS Open Map – Local

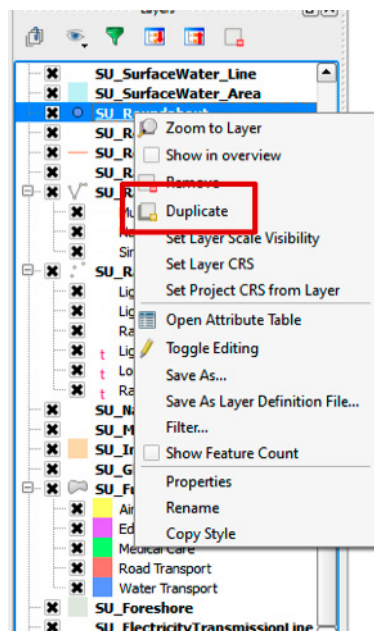
1 Downloading OS OpenData

2 Opening OS OpenData in QGIS

3 Styling Vector Data

4 Opening and saving maps in composer

- Now to duplicate **SU_Roundabout**, right click on the **SU_Roundabout** layer and select '**Duplicate**'.



- Rename the duplicate from **SU_Roundabout copy** to **SU_Roundabout_Case**
- Now duplicate **SU_Road** twice, and rename one copy **SU_Road_Case**, and the other copy **SU_Road_Centreline**. To rename right click on the layer and select '**rename**'.
- For each of these layers, right click and select '**Properties**' and on the '**Style**' tab load in their respective QML files using '**Load Style**' as before.



search

OS OPENDATA SIMPLE GUIDE

Product: OS OPEN MAP – LOCAL

Introduction

About this guide

Using OS Open Map – Local

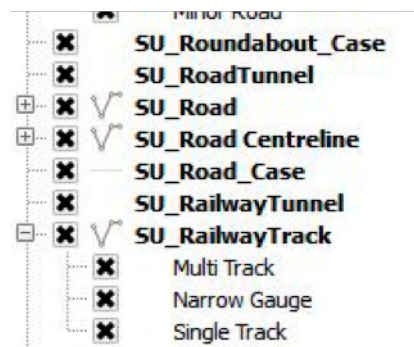
1 Downloading OS OpenData

2 Opening OS OpenData in QGIS

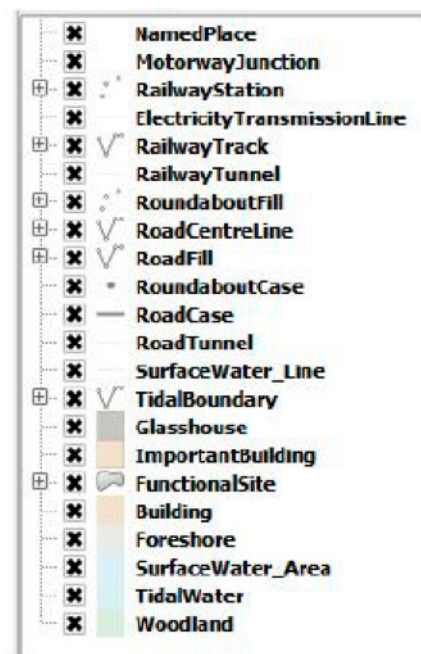
3 Styling Vector Data

4 Opening and saving maps in composer

- Ensure all the layers are selected with crosses.



- For best legibility of the map the recommended layer order is show below:



To rearrange the layers click on the layer you wish to move and drag down or up the list to the required position.



OS OPENDATA SIMPLE GUIDE

Product: OS OPEN MAP – LOCAL

Introduction

About this guide

Using OS Open Map – Local

- 1 Downloading OS OpenData
- 2 Opening OS OpenData in QGIS
- 3 Styling Vector Data
- 4 Opening and saving maps in composer

- The resultant map should look similar to this:



- The map is most functional for scales 1:3 000-1:20 000. For this tutorial we want a map of an area of Southampton at a scale of **1:10 000**. Use '**Pan tool**', '**Zoom in**' and '**Zoom out**' to position the map over Southampton at an appropriate scale, or alternatively set the scale of the map by typing in the scale bar which is at the bottom of the window.



search

OS OPENDATA SIMPLE GUIDE

Product: OS OPEN MAP – LOCAL

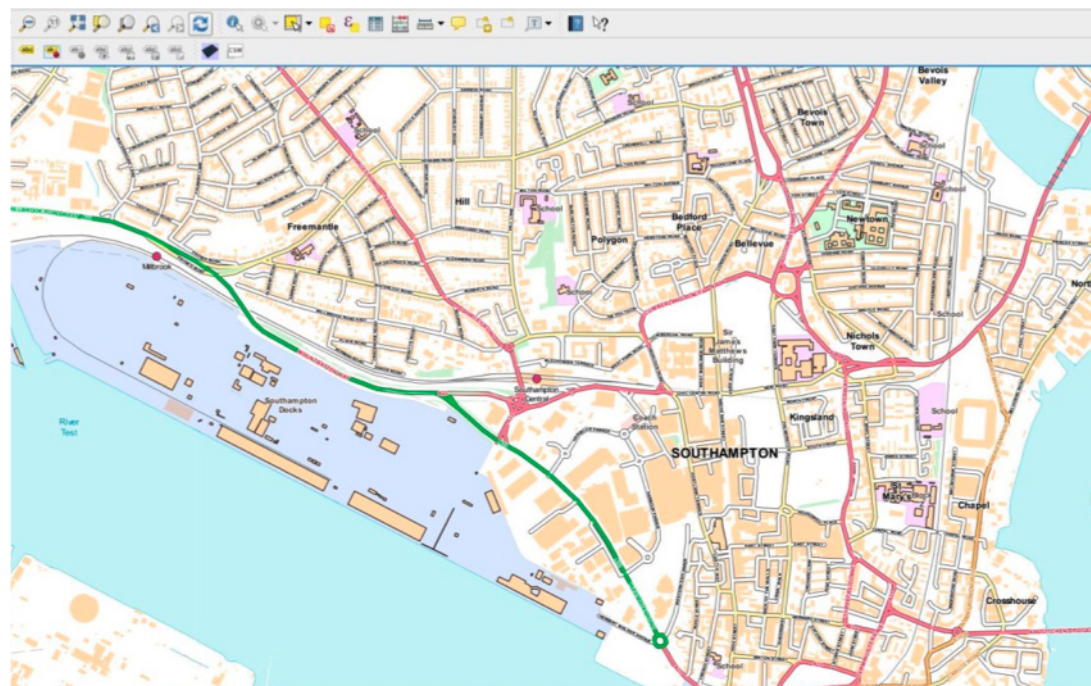
Introduction

About this guide

Using OS Open Map – Local

- 1 Downloading OS OpenData
- 2 Opening OS OpenData in QGIS
- 3 Styling Vector Data
- 4 Opening and saving maps in composer

- The map should now look similar to this:



© Crown copyright and/or database right 2015.



search

OS OPENDATA SIMPLE GUIDE

Product: OS OPEN MAP – LOCAL

Introduction

About this guide

Using OS Open Map – Local

1 Downloading OS OpenData

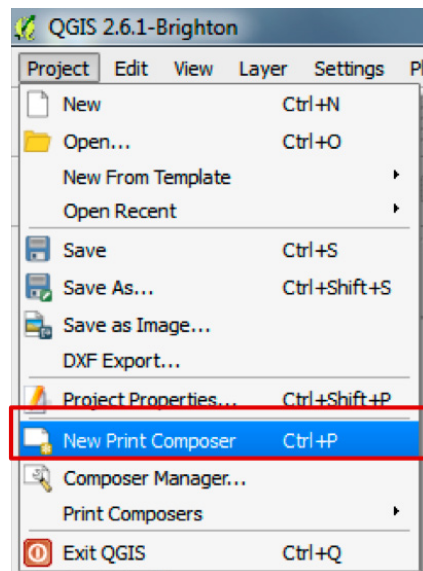
2 Opening OS OpenData in QGIS

3 Styling Vector Data

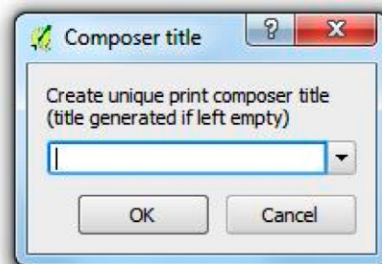
4 Opening and saving maps in composer

4 OPENING AND SAVING MAPS IN COMPOSER

- Once you are happy with the scale and position, click **Project > New Print Composer**.



- A window will open asking for an ID/Title, however it is not required. Click **OK**.



search

OS OPENDATA SIMPLE GUIDE

Product: OS OPEN MAP – LOCAL

Introduction

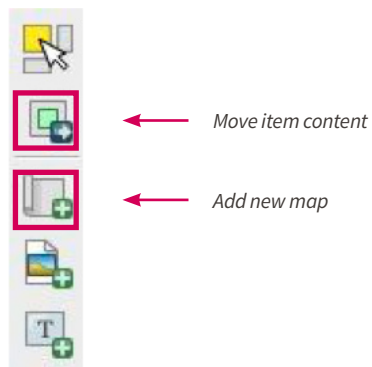
About this guide

Using OS Open Map – Local

- 1 Downloading OS OpenData
- 2 Opening OS OpenData in QGIS
- 3 Styling Vector Data
- 4 Opening and saving maps in composer

- A new window will open showing a blank page. To insert the map from QGIS click on **'Add new map'** (see below).

Left click and then drag a rectangle to select the dimension of the added map. Once added the position of the map within the frame can be adjusted by selecting **'Move item content'** (see below).



search

OS OPENDATA SIMPLE GUIDE

Product: OS OPEN MAP – LOCAL

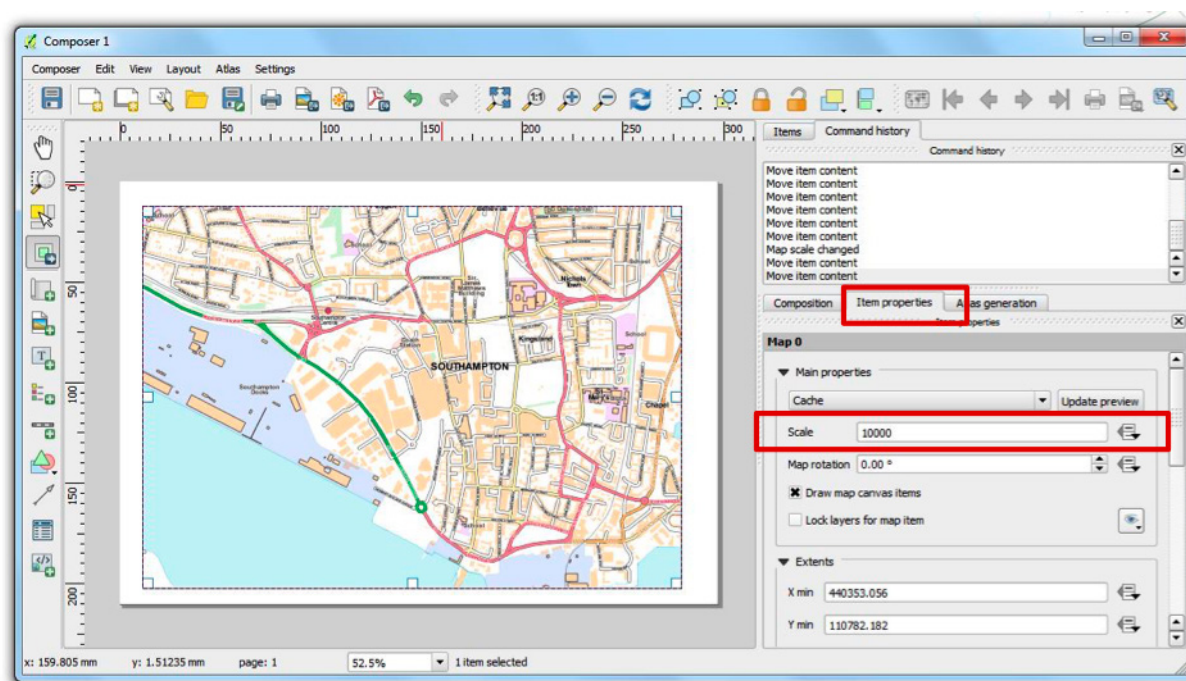
Introduction

About this guide

Using OS Open Map – Local

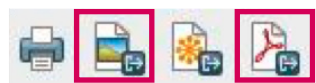
- 1 Downloading OS OpenData
- 2 Opening OS OpenData in QGIS
- 3 Styling Vector Data
- 4 Opening and saving maps in composer

- Click on **Item Properties** on the task bar on the right. The specific scale can be selected here, and if you scroll down there are several other options including **Position and Size**. Here the dimensions of the map on the page can be adjusted in millimetres. Careful, as when altering the position and size the scale will also change.



Note: OS Open Map – Local is most useful to design a map within scales of 1:3 000-1:20 000 for this map of Southampton the selected scale is 1:10 000.

- Once you are happy with the image you can export the map as an image or a PDF by selecting **'Export as image'** or **'Export as PDF'** respectively (see below). And save within an appropriate folder.



Export as image Export as PDF



search

OS OPENDATA SIMPLE GUIDE

Product: OS OPEN MAP – LOCAL

Introduction

About this guide

Using OS Open Map – Local

- 1 Downloading OS OpenData
- 2 Opening OS OpenData in QGIS
- 3 Styling Vector Data
- 4 Opening and saving maps in composer

- Your final JPEG image should look similar to this:



© Crown copyright and/or database right 2015.



search

**Customer Service Centre, Ordnance Survey,
Adanac Drive, Southampton, United Kingdom, SO16 0AS**

+44 (0)3456 050505 (General enquiries)

+44 (0)3456 050504 (Welsh helpline)

+44 (0)2380 056146 (Textphone)

customerservices@os.uk

www.os.uk

© 2015 OS
D13836_0815



search